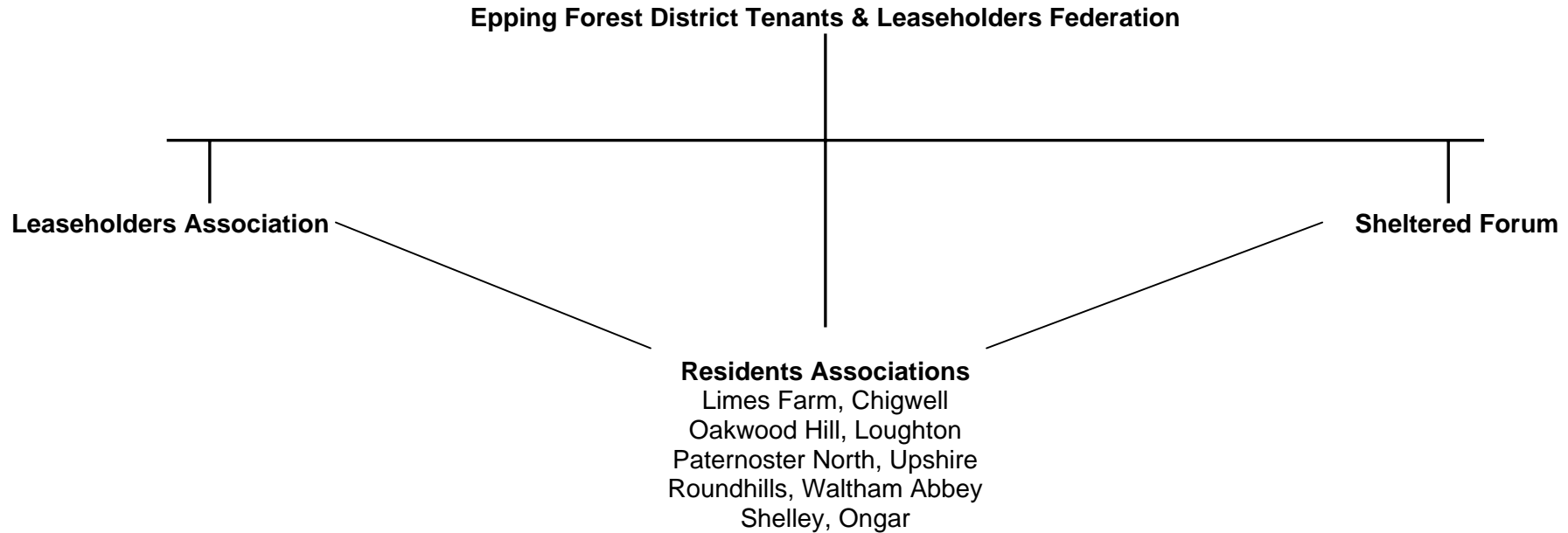


# Tenant Participation in Epping Forest



Tenants & Leaseholders Federation meets with the Council every 6 weeks to be consulted and informed about issues affecting the residents of Epping Forest. The Federation represents all tenants & leaseholders of EFDC and the executive committee is made up of 2 representatives from each of the Council's recognised residents associations, the Leaseholders Association and the Sheltered Forum.

The Leaseholders Association represents the Council's leaseholders and meets with the Council every 10 weeks to discuss issues affecting leaseholders and leasehold services.

The Sheltered Forum is made up of representatives from the Council's sheltered housing and group-dwelling schemes. The Forum is held every 7-8 weeks and is attended by a number of Council officers. Issues affecting residents living in accommodation with a scheme manager are discussed.

EFDC currently has 5 recognised residents associations. Limes Farm Community Association, Chigwell; Oakwood Hill Residents Association, Loughton; Paternoster North Residents Association, Upshire; Roundhills Residents Association, Waltham Abbey and Shelley Residents Association, Ongar